



Trail Systems In and Around North Berwick



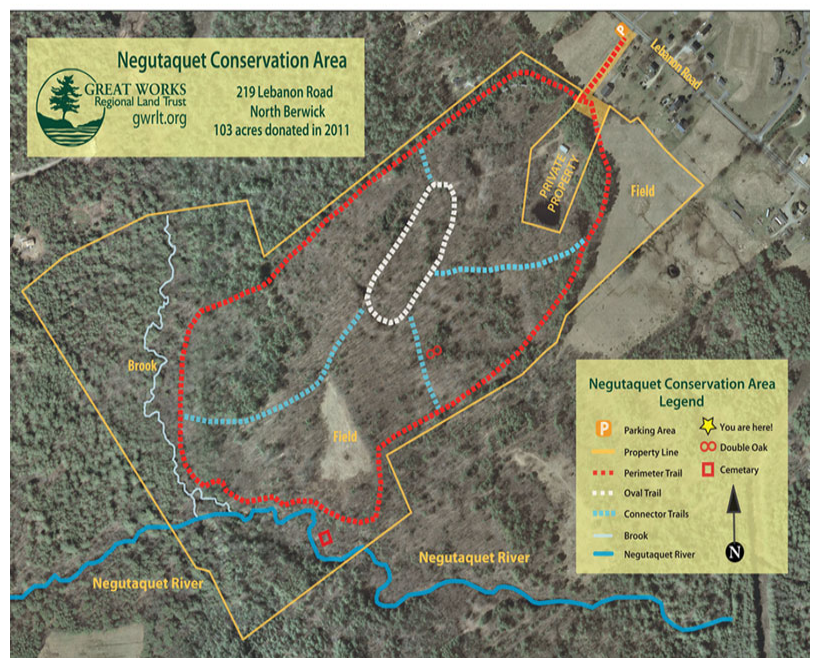
Maple Street Conservation Area and Town Forest Trail:

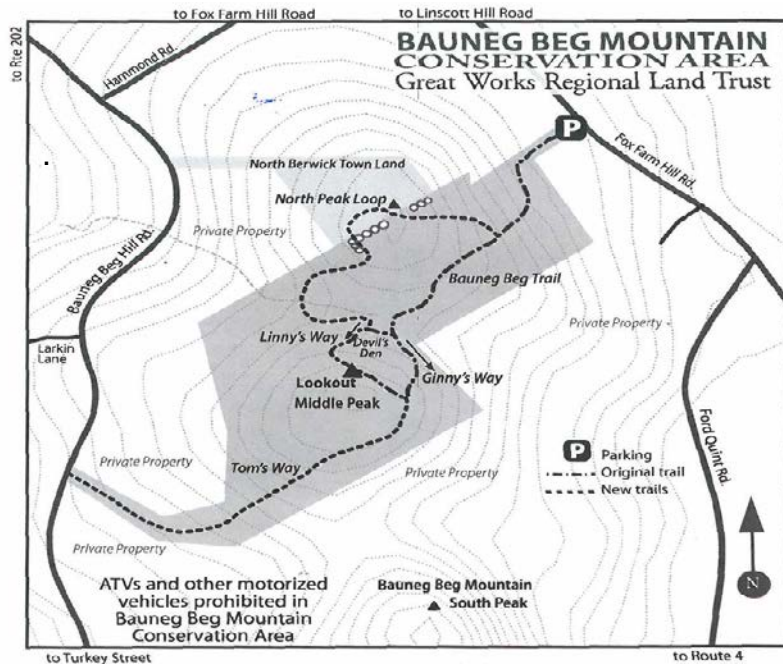
Located between Maple Street and Somersworth Road (Route 9), this 60 acre parcel of land was established as the Town Forest in 2018 and has 2.5 miles of trails throughout the parcel. The Town Forest is an actively managed forest that residents and visitors can enjoy. Throughout the trail system are interpretive signs depicting wildlife such as Eastern Box and Blanding Turtles and natural features such as Vernal pools and stone walls. Access to the trails are through the two parking lots; one located on Maple Street and the other on Somersworth Road. In 2020, The Town and the Great Works Land Trust connected the Maple Street Forest Trails with the Negutaquet Conservation Area by constructing a bridge over the Negutaquet River; providing more than 5 miles of connected trail systems in North Berwick.

Great Works Regional Land Trust Negutaquet Conservation Area: (located off Lebanon Rd.)

This 100 acre conservation area, donated by Vera Spohr in 2012, is a beautiful, restful place with open fields and scenic views.

This property has approx.. 2 miles of trail systems winding through a hardwood forest along the river's edge. The trail features many highlights including the old Weymouth Cemetery, the "Double Oak" beaver habitat and views of the wide and meandering floodplain.





Great Works Regional Land Trust Bauneg Beg Mountain Conservation Area:

Located in the Northern tip of NB, the trails wind through deciduous forest, then up through a pine grove through a large boulder section known as Devil's Den and on to the view of the high peak. The hike is about a half hour walk and there is a choice of a longer – Ginny's Way- or a steeper – Linny's Way routes to the top.

For more info on the trail systems www.gwrlt.org

Community Center Trails – Madeline Blaisdell Walking Trails:

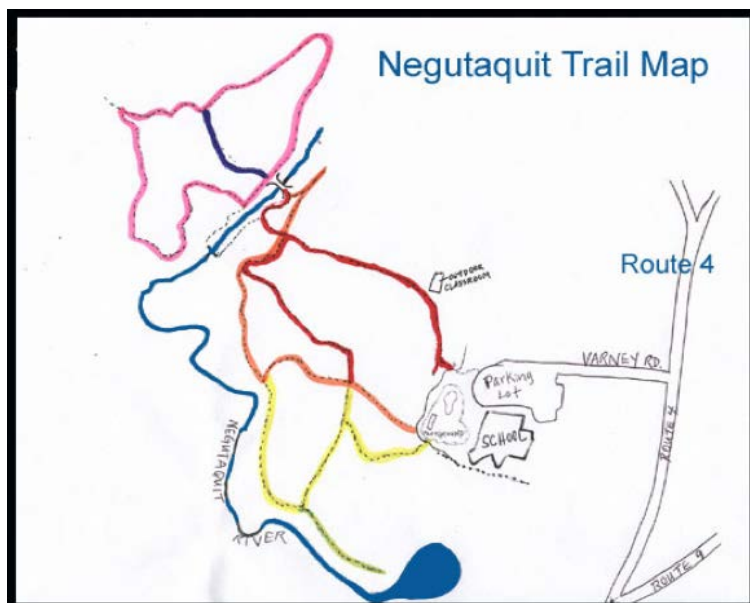
The upper loop is .48 miles long flat walking trail for people of all ages. The woods loop is .46 miles long and a little more challenging. There are signs and brochures available for your convenience. There is a port-a-potty on the backside of the building from April-November. There is NO PARKING in the front circle. PLEASE help us to keep the area clean by taking your trash with you. We added a water bubbler on the backside of the community center for your convenience.



Negutaquit Nature Center/Primary School Trails:

The Negutaquit Nature Center, located behind the Primary School's playground, is made up of 55 acres of land. Students and teachers are fortunate to be able to walk the trails and use the nature center to gain first-hand knowledge about the plants and animals that thrive there. It is open to the public year-round.

The Negutaquit Nature Center has a wide variety of habitats: field, forest, and a stream.



Eastern Trail:

The Eastern Trail is a 65-mile section of the East Coast Greenway, a transportation-recreation greenway connecting Kittery, in southernmost Maine to Casco Bay in S. Portland.

You can download a trail guide, sign up for a newsletter, get a brochure and do fun things at www.easterntail.com

The Mount Agamenticus Conservation Region:

Mount "Aggie" is located in nearby South Berwick. It is known for its unique trail system and rich natural resources. State, local and non-profit landowners are working together to balance protection of these lands for wildlife habitat and water quality while providing safe and sustainable recreation. For more info go to: www.agamenticus.org